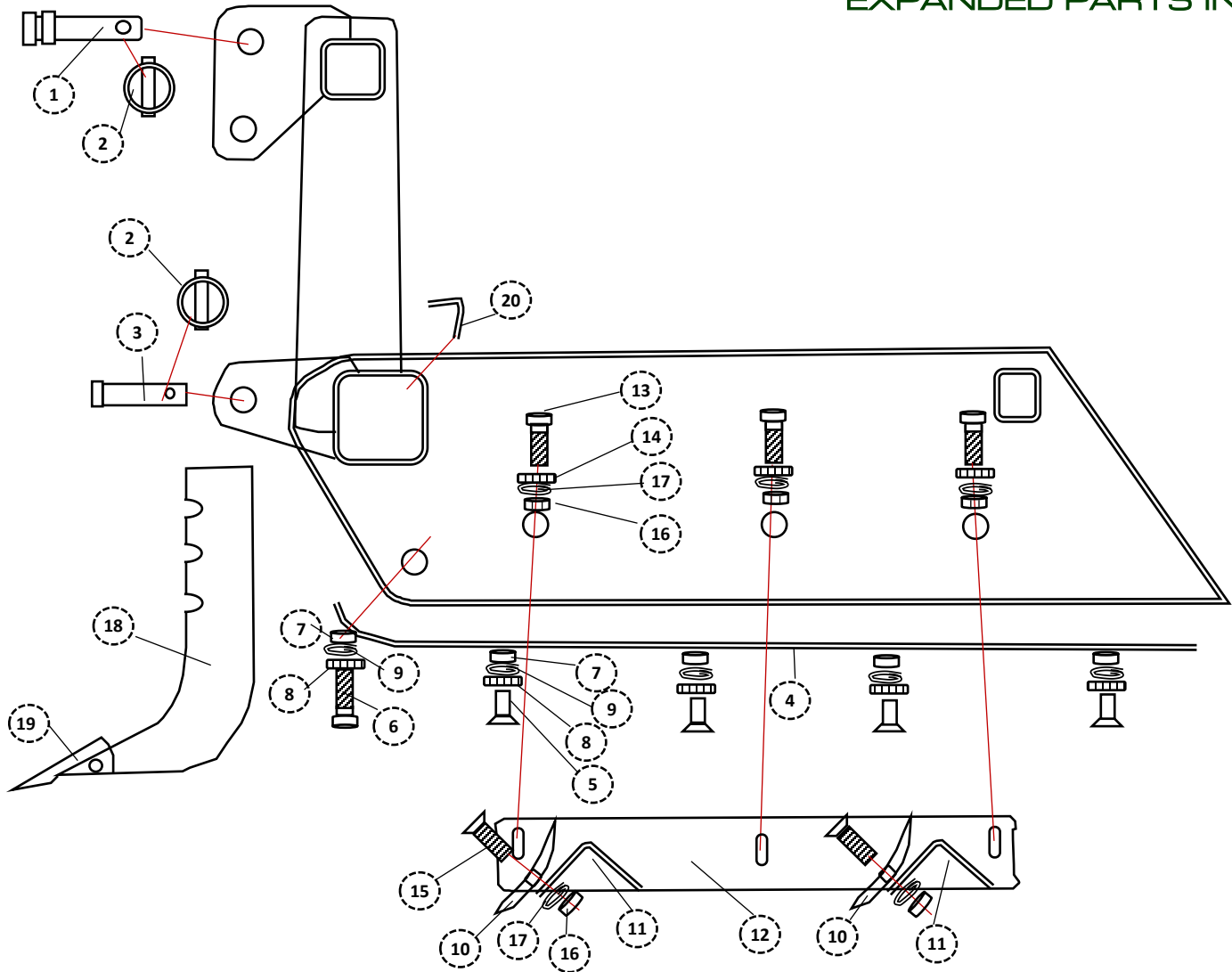


GRADING SCRAPER

COMPACT GRADING SCRAPER

EXPANDED PARTS INDEX



		4	5	6	7	
1	P075500C1TL	CAT I TOP LINK PIN	1	1	1	1
2	P716175Y	7/16 X 1 1/2" LYNCH PIN	3	3	3	3
3	P078375C1D	CAT I HEAVY DUTY DRAW PIN	2	2	2	2
4	F05RG01	SIDE PLATE SKID STRAP	2	2	2	2
5	B038100CS	3/8 X 1" COUNTER SUNK BOLT	8	8	8	8
6	B038150	3/8 X 1 1/2" BOLT	2	2	2	2
7	N038H	3/8" NUT	10	10	10	10
8	W038F	3/8" FLAT WASHER SAEF	12	12	12	12
9	W038L	3/8" LOCK WASHER	10	10	10	10
10	CE	CUTTING EDGE	2	2	2	2
11	P01GS03/4/5/7	SCRAPER ANGLE	2	2	2	2

		4	5	6	7	
12	P02RG01	BOLT PLATE	2	2	2	2
13	B058150	5/8 X 1 1/2" BOLT	6	6	6	6
14	W058SAEF	5/8" FLAT WASHER SAEF	6	6	6	6
*15	B058200P	5/8 X 2" PLOW BOLTS	8	10	12	14
*16	N058H	5/8" HEX NUT	14	16	18	20
*17	W058L	5/8" LOCK WASHER	14	16	18	20
*	B058200PA	PLOW BOLT ASSEMBLY-BOLT, LOCK WASHER, HEX NUT	8	10	12	14
18	S1361B	3-NOTCH SHANK WITH TIP	4	4	5	7
19	H434T	REPLACEABLE TIP				
20	SB0205800BL	SHANK WEAR PIN	4	4	5	7

PLEASE NOTE: The illustrations above are for reference only. SUPERIOR IMPLEMENTS reserves the right to change or correct part numbers, descriptions or dimensions at any time. If you have specific questions about parts not specified in the illustration above, please contact your SUPERIOR IMPLEMENTS authorized dealer.