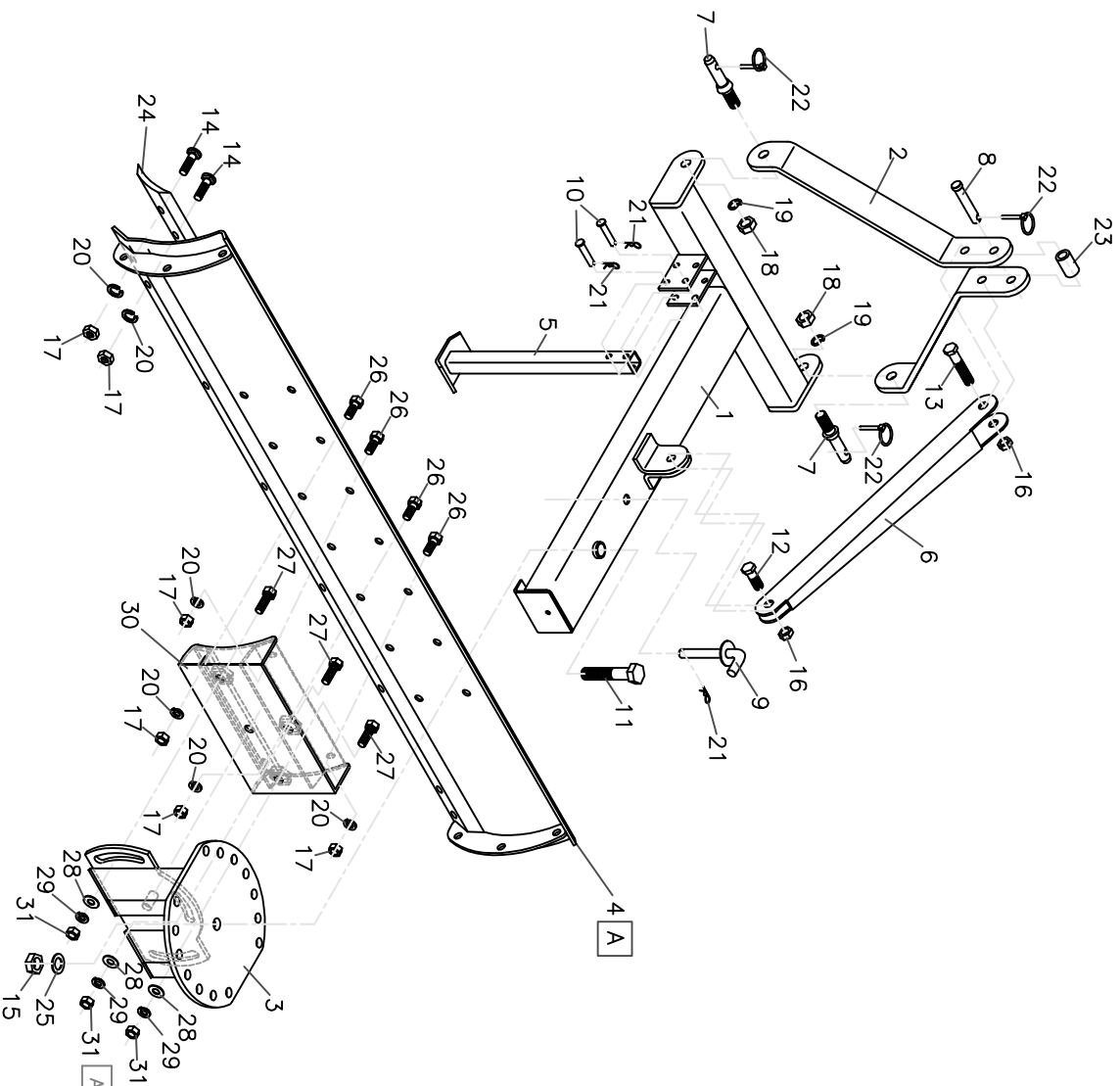


REVISION RECORD

DWG STATUS:	CHG NO.:	REV.:
SYMBOL	CHG. #	REVISION
A	00006	SE INCLUYEN CARTABONES.
		DATE
		07/04/06
		CHG BY/NAME
		F. TORRES.



31	4220-1014-01	HEX. NUT, 3/4 - 10 UNC	3
30	CN05040300W	BACKING	1
29	4250-1032-01	LOCK WASHER, 3/4	3
28	4240-1028-01	WASHER, 3/4	3
27	4210-5450-01	HEX. BOLT, 3/4 X 1-3/4 - 10 UNC G5	3
26	4210-5372-01	HEX. BOLT, 5/8 X 1-1/2 - 11 UNC G5	4
25	4240-1032-01	WASHER, 1	1
24	4370-1030-00	6 FT. CUTTING EDGE (1.80M) - 249-600	1
23	CN05040005C	HITCH BUSHING	1
22	4270-2040-01	KLIK PIN, 3/8	3
21	4270-1004-01	SAFETY PIN, 1/8	3
20	4250-1028-01	LOCK WASHER, 5/8	12
19	4250-1036-01	LOCK WASHER, 7/8	2
18	4220-1016-01	HEX. NUT, 7/8-9 UNC	2
17	4220-1012-01	HEX. NUT, 5/8 - 11 UNC	12
16	4220-1014-51	INC. NYLON NUT, 3/4-10 UNC	2
15	4220-1018-80	GRIPCO HEX. NUT, 1 - 8 UNC	1
14	4210-5372-11	PLOW BOLT, 5/8 X 1-1/2-11UNC G5	8
13	4210-5472-01	HEX. BOLT, 3/4 X 4-1/2 - 10 UNC G5	1
12	4210-5456-01	HEX. BOLT, 3/4 X 2-1/2 - 10 UNC G5	1
11	4210-5602-01	HEX. BOLT, 1 X 5 - 8 UNC G5	1
10	CN05011200C	PARKING STAND PIN	2
9	CN05011100W	TURN TABLE PIN	1
8	CN05011000C	UPPER HITCH PIN	1
7	CN05040004C	LOWER HITCH PIN	2
6	CN05040003C	TENSOR	1
5	CN05010500W	PARKING STAND	1
4	CN06060100W	6FT. MOLDBOARD	1
3	CN05040200W	TURN TABLE	1
2	CN05040001C	HITCH ARM	2
1	CN05040100W	MAIN FRAME	1
ITEM	PART NO.	DESCRIPTION	QTY

Tecnomec Agrícola

S.A. de C.V.

THESE DRAWINGS AND SPECIFICATIONS, AND THE DATA CONTAINED THEREIN, ARE EXCLUSIVE PROPERTY OF TECNOMEC, S.A. DE C.V. ISSUED IN STRICT CONFIDENCE AND SHALL NOT BE REPRODUCED OR TRANSMITTED IN ANY FORM OR BY ANY MEANS, WITHOUT THE PRIOR WRITTEN PERMISSION OF TECNOMEC, S.A. DE C.V. EXCEPT FOR THE MANUFACTURE OF ARTICLES FOR TECNOMEC S.A. DE C.V. PURPOSES.

DESCRIPTION: CULTIVADORA NIVELADORA NVHF-182

DWG NUM:	CN06060000A	QTY:	1
DWG REF:	CN06060000A	FILENAME:	CN06060000A
DWG SIZE:	A4	DIRECTOR:	NVHF-182

UNLESS OTHERWISE SPECIFIED:		TECNOMEC MATERIAL SPECIFICATION:		PRODUCT:	
DIMENSIONS IN: INCHES		UNTOLERANCED DIMENSIONS		NVHF-182	
MILLIMETRES		DIMENSION TOLERANCE		RELATED SPECIFICATIONS:	
X		± 0.030			
□		± 0.010			
REFER TO FOR DRAWING INTERPRETATION.		APPROVAL SIGNATURES		DATE	
THIRD ANGLE PROJECTION		DESIGNED BY: ING. ERICK S. SALAZAR CONTRERAS		25/04/05	
MAXIMUM SURFACE TEXTURE		DRAWN BY: ING. ERICK S. SALAZAR CONTRERAS		25/04/05	
✓		APPROVED BY: ING. FRANCISCO TORRES GONZALEZ		DO NOT SCALE PRINT	
ANGLES		± 0.5°			