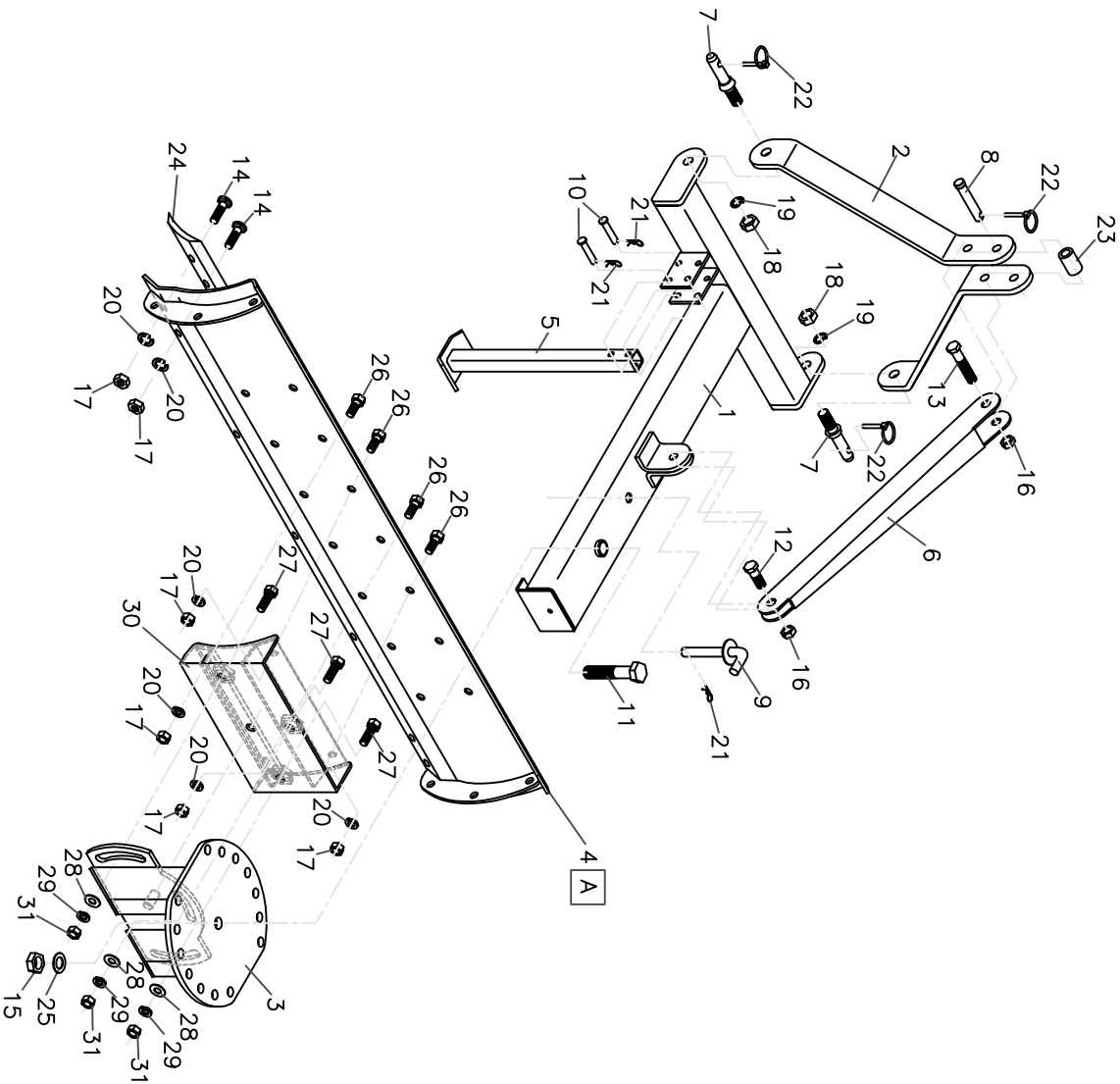


# REVISION RECORD

DWG STATUS:	CHG NO.:	REV.:
SUBJECT:	REVISION	CHG BY/NAME
SYMBOL	CHG. #	DATE
A	00086	07/04/06
	SE INCLUYEN CARTONAJES.	F. TORRES.



31	4220-1014-01	HEX. NUT, 3/4 - 10 UNC	3
30	CN05040300W	BACKING	1
29	4250-1032-01	LOCK WASHER, 3/4	3
28	4240-1028-01	WASHER, 3/4	3
27	4210-5450-01	HEX. BOLT, 3/4 X 1-3/4 - 10 UNC G5	3
26	4210-5372-01	HEX. BOLT, 5/8 X 1-1/2 - 11 UNC G5	4
25	4240-1032-01	WASHER, 1	1
24	4370-1011-00	5 FT. (1.52M) CUTTING EDGE	1
23	CN05040005C	BUSHING	1
22	4270-2040-01	KLIK PIN, 3/8	3
21	4270-1004-01	SAFETY PIN 1/8	3
20	4250-1028-01	LOCK WASHER, 5/8	11
19	4250-1036-01	LOCK WASHER, 7/8	2
18	4220-1016-01	HEX. NUT, 7/8-9 UNC	2
17	4220-1012-01	HEX. NUT, 5/8 - 11 UNC	11
16	4220-1014-51	INC. NYLON HEX. NUT, 3/4-10 UNC	2
15	4220-1018-80	GRIPCO HEX. NUT, 1 - 8 UNC	1
14	4210-5372-11	PLow BOLT, 5/8 X 1-1/2-11UNC G5	7
13	4210-5472-01	HEX. BOLT, 3/4 X 4-1/2 - 10 UNC G5	1
12	4210-5456-01	HEX. BOLT, 3/4 X 2-1/2 - 10 UNC G5	1
11	4210-5602-01	HEX. BOLT, 1 X 5 - 8 UNC G5	1
10	CN05011200C	PARKING STAND PIN	2
9	CN05011100W	TURN TABLE PIN	1
8	CN05011000C	UPPER HITCH PIN	1
7	CN05040004C	LOWER HITCH PIN	2
6	CN05040003C	TENSOR	1
5	CN05010500W	PARKING STAND	1
4	CN05040400W	5 FT. MOLDBOARD	1
3	CN05040200W	TURN TABLE	1
2	CN05040001C	HITCH ARM	2
1	CN05040100W	MAIN FRAME	1

UNLESS OTHERWISE SPECIFIED:  
 DIMENSIONS IN:  INCHES  MILLIMETRES  
 REFERENCE TO THIRD ANGLE PROJECTION:    
 MAXIMUM SURFACE TEXTURE:

TECNOMEC MATERIAL SPECIFICATION:	PRODUCT:
	NVHF-152
RELATED SPECIFICATIONS:	
APPROVAL SIGNATURES:	DATE:
DESIGNED BY: ING. ERICK S. SALAZAR CONTRERAS	25/04/05
DRAWN BY: ING. ERICK S. SALAZAR CONTRERAS	25/04/05
APPROVED BY: ING. FRANCISCO TORRES GONZALEZ	25/04/05

DESCRIPTION: CULTIVADORA NIVELADORA NVHF-152	WEIGHT:
	SCALE: 1:20
	SHEET 1 OF 1
	DO NOT SCALE PRINT
DWG NUM: CN05040000A	QTY: 1
REF DWG: CN05040000A	DIRECTOR: NVHF-152

**Tecnomec Agrícola**  
 S.A. de C.V.  
 THESE DRAWINGS AND SPECIFICATIONS, AND THE DATA CONTAINED THEREIN, ARE EXCLUSIVE PROPERTY OF TECNOMEC, S.A. DE C.V. ISSUED IN STRICT CONFIDENCE AND SHALL NOT BE REPRODUCED OR TRANSMITTED IN ANY FORM OR BY ANY MEANS, ELECTRONIC OR MECHANICAL, INCLUDING PHOTOCOPYING, RECORDING, OR BY ANY INFORMATION STORAGE AND RETRIEVAL SYSTEM, WITHOUT THE PRIOR WRITTEN PERMISSION OF TECNOMEC, S.A. DE C.V. FOR THE MANUFACTURE OF ARTICLES FOR TECNOMEC S.A. DE C.V. ONLY.